



**Gwernaffield and Pantymwyn Community Council
Newsletter – July 2016
Issue No 6**



Can you name all these places???

Maybe you have a photograph taken within the Community or a Community Event or one that you have taken when out and about that you would like to be put on the front page, if so then please contact the editor.

lynne@lynnepritchard.wanadoo.co.uk

COMMUNITY COUNCIL

The Council has concern regarding the removal of the Post Box by the Hand Inn by the Royal Mail due to an attempt to steal it.

The Council has been in communication with Royal Mail who are looking at a convenient place to put up a new Post box in the village. We will keep you updated.

Summer playscheme at school was under review due to funding from the Welsh Government. Fortunately there will be funding so the Community Council will match fund the scheme and the Playscheme will go ahead for first three weeks of the school summer holidays. We would ask that children are careful and do not go near the actual school as there will be remedial work going on in the infants playground. Keep a look out for posters with date and times.

The Community Council held a litter pick in April (see page 8)

Concern about blasting noise from the quarry, the clerk has written to the Quarry Manager and the councils representatives who attend the Quarry Liaison Meetings will follow this up.

The clerk reported she had spoken with Mrs K Wilby, Transportation and Logistics Manager at Flintshire County Council with regard to a request raised by a resident about a bus shelter in Pantymwyn (opposite the park). A minimum of 50% of the cost would need to be found by the community council between £2,000 - £6,000. This is set against a review of bus services taking place across the County. At present Pantymwyn and Gwernaffield bus services are not affected however Flintshire County Council has a diminishing transport budget which may see a further review of and possible reduction in bus services as Flintshire County Council cannot continue to subsidise such routes. Flintshire County Council has had a £250,000 cut this year anticipating more next year, so it will be reviewed again next year.

Basically, it may become a case of use your local bus service or lose it! They cannot keep subsidising journeys at the rate they are.

Cllr Lynne Pritchard has been re-elected as Chair for the Community Council for 2016/17 with Councillor George Tattum as vice chair.

Pantymwyn & Gwernaffield Street Lighting Up-date.

Over the next few weeks the community council contractor will recommence with the upgrading of the street lights within both villages. This is the replacement of the old sodium based units with new LED, low energy lamps. Each new unit costs approximately £500, however the maintenance saving will amount to £40 per unit per year.

Twelve units have already been replaced, primarily along the main

Gwernaffield/Cilcain road, & it is envisaged that this number will double over the Summer months.

Villagers will notice that the new LED lamps will restrict the illumination to the roads & pavement & therefore vastly reduce light pollution onto surrounding homes & gardens. The additional benefit being that it will enable the community council to apply to "Dark Skies" for funding towards the project, & reduce the ongoing costs. If any villager requires further information then they can contact the councillors involved in the project, who are, Adrian Barsby, David Bolton, Rob Edwards & George Tattum.

Gwernaffield Footpath to Mold

Both Gwernaffield and Pantymwyn Community and Mold Town Councils have asked Flintshire County Council to carry out maintenance and make improvements to the footpath that runs alongside the road down to Mold. For much of its length it is overgrown and needs cutting back and there are a few pinch points where the existing path is not wide enough. The County have identified the adjacent owners and are approaching them to seek their support and are looking to put together a strategy for long term improvement when funding might become available.

However in the short term they have been asked to improve the condition of the existing path which in the main involves cutting hedges and path verges. They are making use of the Probation Community Support service whenever possible to do some of the work but progress is very slow.

There has also been suggestion by some residents that the 30 mph speed limit should be extended up to the Gwernaffield village sign reducing it from the current 60 mph at present. This would help make the footpath safer on the bends at the approach into the village.

Pressure from the community generally would help focus the attention of the County Council.

GWERNAFFIELD PLAY AREA

The Community Council are pleased to announce that the Gwernaffield Play Area is now under the trusteeship of the Community Council. A new sign has been sponsored and is at present being made and will be erected shortly.

The Council will be advertising a meeting for residents who are concerned about the future and upkeep of the play area and to hopefully come up with some ideas and help with fundraising so that we can have a park as good as others in the area.

We are also looking for a volunteer to lock and unlock the playpark.

If you are interesting in helping or have any ideas then please come to the meeting when the date is known or contact

Cllr Carl Hopwood - carl.hopwood@btinternet.com

Two new directional signs have been sponsored one for Gwernaffield and one for Pantymwyn they will be erected shortly. Our thanks go to Excel signs.

Introduction to your County Councillor.

My name is Adele Davies-Cooke, I have had the privilege of being your County Councillor for Gwernaffield and Pantymwyn since 2008. I am not on your Community Council however I do try to attend when I am able to do so.

Many of you know me and have contacted me in the past, I want everyone to feel they may contact me on any matters concerning the Ward, in the strictest confidence.

I have campaigned on behalf of Gwernaffield and Pantymwyn over many matters you have brought to my attention, from improvements to the roads, pot-holes, dog bins, advice on private and personal affairs, mediation and planning issues.

My first major project I inherited on being elected in 2008 was the 'Pont Newydd Bridge'. To me in the end there was no argument over the replacement, CADW did not want to protect it, on discussing with the Fire and Ambulance services, both services had to practice crossing the old bridge to and from Cilcain, common sense told me we had to accept this improvement and what a beautiful bridge it is.

Since 2008 I have been trying to improve the pavement from Gwernaffield to Mold. My concerns for Resident's safety is paramount, the excuses have been, 'compulsory purchase of land', 'finance to do the job' and 'EU Legislation' that this 'foot path' has to be 1.2 metres!! The fight continues.

I campaigned against Flintshire County Council's policy of Parents not being able to send their children to the nursery school of their choice. This affected me when I became your County Councillor, un-usually having a child later on in life I could not initially send my daughter to Ysgol Y Waun. This shocked me as I know parents that work need support from their family and friends, e.g. Grandparents living in a different area to the child. I fought Flintshire County Council for this and now If there is a place at a Nursery School of your choice, your child may attend.

Any matters of concern, personal or otherwise, if I can be of help, my contact details are: -

By email on adele.daviescooke@btinternet.com

By telephone on 01352 759034

By post Adele Davies-Cooke, Gerddi Duon Farm, Denbigh Road, Mold, Flintshire. CH7 5HE.

Coming soon..... Family Fun Day at The Crown Inn

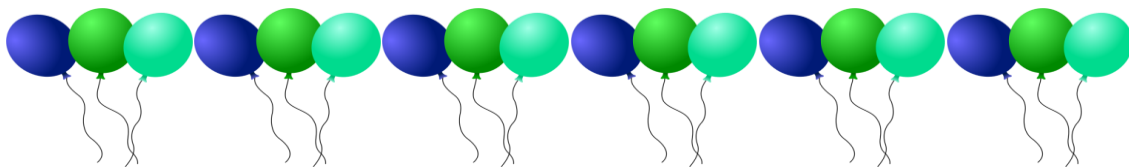
Saturday 27th August

1 -5pm Daytime fun & Evening Band from 7:30

Planning is underway.

Interested in having a stall 1-5 pm or willing to help ?

Contact Pauline 740140 Thanks



Ysgol Y Waun

Ysgol Y Waun did especially well in the County Cross Country with the school winning the team trophy for the very first time.



The group photo names are, starting back left, Isaac, Oliver, Thomas, Caleb, Front Left Blake then Ryley and they are the Lower Junior Boys winning team.

Two individual photos are Oliver, second place in the Lower Junior Boys section and Gethin was third place in the Upper Junior Boys section.

Oliver



Gethin



Local Sporting Success

Connah's Quay Nomads Football Club - Congratulations to Caleb Jones, Pantymwyn who has been with the Nomads Academy for 2 years and has recently been asked to re sign for a 3rd year for the Under 10's. Also to Gethin Roberts of Pantymwyn for having successful trails with the Nomads Academy and will be signing for the Under 8's side to begin next season.



SCARECROW COMPETITION

There will again be a scarecrow competition over the weekend of 8th and 9th of October. You can register your scarecrow with either the Clerk or Cllr Pritchard you must register before **the 30th September** so that a list can be made public for people to go and see them.



Call 01352 740972 or
lynne@lynnepritchardwanadoo.co.uk



**WE ARE
MACMILLAN.
CANCER SUPPORT**

**Macmillan Coffee Morning
Fri 23th September 2015
10.30 - 1pm
Gwernaffield Church Hall**

Community Council Chairman's Charity : please support either by attending or giving a donation : contact Lynne on 01352740972



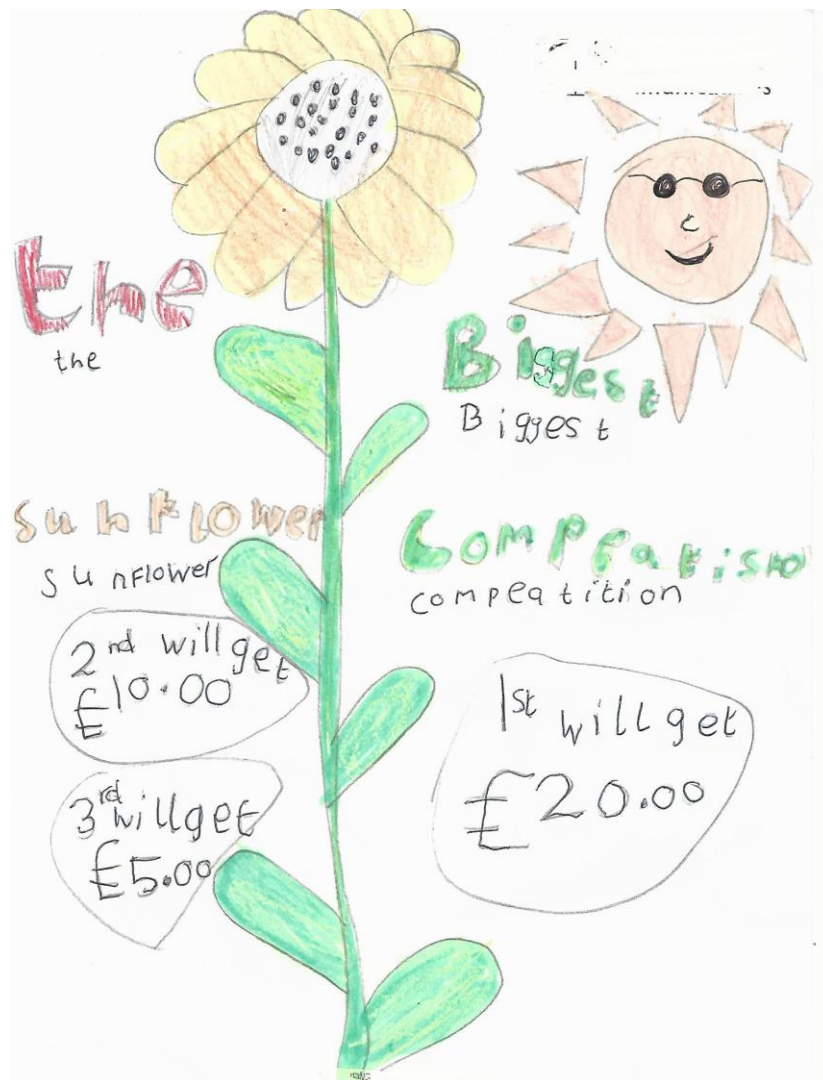
To all our older residents:

Don't forget to make a date in your diary for our annual Christmas lunch provisionally the 12th December at 12.30pm for the over 65's.

Unfortunately this year there will have to be a charge of £5 per ticket, the Council will cover the rest of the cost for your Christmas Dinner and entertainment. Tickets will be on sale at The Post Office, Pantymwyn or contact Cllr Lynne Pritchard.

Please contact: lynne@lynnepritchard.wanadoo.co.uk
01352 740970

SUNFLOWER COMPETITION



Dylan Kensall (sdm joinery specialists ltd) has kindly offered to sponsor a Sunflower Competition within the community. His daughter Ava has drawn the poster above which has been put up around the community.

It will be judged on the 3rd and 4th September, measuring the height as the tallest "from the soil to the tip of the flower."

There will be three prizes of £20, £10 and £5

Why not have a go, make the community colourful.

You must log your entry by the 26th August with the

Council Clerk at: gwernaffield clerk@outlook.com

Or Cllr LynnePritchard lynne@lynnepritchard.wanadoo.co.uk

Litter Pick Held 16th April 2016

There was only a few volunteers that turned up for the litter pick, 5 were over 60 years of age,



7 people 18 years and over and 11 children under 15 years.
Rhys Roberts from Pantymwyn, three years old being the youngest.

It was observed that the nature of the litter picked was mainly snack waste: Plastic bottles, cans, plastic containers, crisp bags, waste paper, plastic carrier bags and some beer bottles.

Some of the rubbish was from household black bins that had probably been blown about in the wind. Please secure your bins when the weather is very windy.

It was reported that at the car park at the bottom of Trail Hill there had been some "Fly Tipping" of materials over the bank near the river. The helpers were unable to retrieve the rubbish. Streetscene was asked to look into it.

It was felt that considering there was so few volunteers helping collect the litter a good amount, 23 bags in all was collected. Just think how much more could have been picked up.

The Council may have a litter pick later on in the year. Watch this space!!!
Hopefully there will be more volunteers.



GWERNAFFIELD CHURCH

Coffee Morning

Our next Coffee Morning at The Daniel Owen Centre in Mold will be held on 3rd September next from 9.30am to 12noon. There will be a cake stall and a sales table and we look forward to seeing you all there.

Christian Aid Coffee Morning

The amount raised from the recent coffee morning and donations totalled £404.14 – thank you to all who supported this worthy cause

Advance Notice – Harvest Supper

This year's Harvest Supper is due to be held on Saturday 1st October from 7.30pm onwards. This will be a hotpot supper and there will also be entertainment for you. Tickets are £5.00 each; please contact 01352 740550 or 01352 740068 for further information on what is always a popular and fun evening

Gardening for Butterflies and Bees: A How To Guide

Betty Lee, who tends our conservation gardens, has kindly donated the above book. Details of Holy Trinity Church are on page 225 and well worth a look. The book is on the back table- please feel free to borrow it if you wish, but kindly leave your details so that we can keep tabs on it.

Warden Vacancy

We have a vacancy for a Church Warden and would be interested to hear from anybody wanting further information on this very important but not time-consuming role. Please speak to Adrian or Peter Davies if you are interested or have any questions about this role.

Pen y Fron Team Forthcoming Events:-

Sat 24th September - Musical Evening at Pantymwyn Village Hall, 7.00pm

Sun 2nd October - Harvest celebration at Pen y Fron Chapel, 2.30pm

Fri 28th October - Film Night at Pantymwyn Village Hall, 7.00pm

Wed 14th December - Christmas Carol Service at Pen y Fron Chapel, 7.00pm

Tue 20th December - Soup lunch followed by Carol singing at Village Hall 12.00 onwards

Informal, cafe style Sunday services are held at Pantymwyn Village Hall at 11.30am.

Monthly services at Pen y Fron Chapel are on the first Sunday at 2.30pm.



Fortnightly soup lunches at Pantymwyn Village Hall 12-1.00 Tuesdays, all welcome!

Pantymwyn Village Hall 'It's a great place to meet!'

Join in, lots going on to improve fitness & creativity



Short Mat Bowls Mondays 2-4pm & Fridays 10- 12am

Pop in to find out how to play this fun sport using our new indoor bowls mat.

Table Tennis Thursdays 9:30 -11:00am

TREK Exercise classes – Mondays & some Saturdays, look out for posters around the village

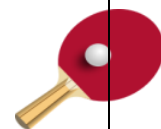


Photo Group Monday 4th July 7:45 -9:30pm

New members welcome. Just take photos on the theme of 'Sky' & choose 5 examples that you like.

We all bring our 5 images on a memory stick & share them on the big screen.



It's an interesting & informative way to learn new ideas.

TREK Exercise classes – Mondays & some

Art Group on Tuesdays 9:30 - 11:30am is full but call in to put your name on the waiting list.

Pantymwyn Village Hall Community Garden

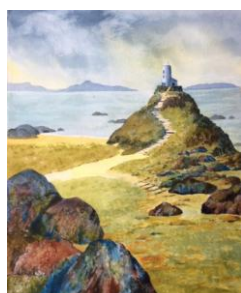
Thursday July 21st 9:30 -11:00

'Join local enthusiasts to keep the garden looking good'



..... and snip a herb for free!

September Helfa Gelf Art Trail 2016 at Pantymwyn Village Hall



For the third year in succession the village hall is being transformed into a gallery for the weekend of Sept 9th, 10th & 11th. Local artists Marlene Clarke & Julia Jones will be exhibiting new artwork. All visitors will receive a very warm welcome. Please bring your family & friends for a browse. Refreshments & homemade cakes made by the Pantymwyn Village Art group will be available every day.

RAVENMAD ARTISTS



Ever wondered what the mad artists get up to when they're locked away in their studios? Well here's your chance to find out. Come along to **Gwernaffield Church Hall** and see for your self the work of local mad artists Ray Jeacock, Annie Lloyd, David Wildblood, Michael Roberts and Graham Sumner.

SATURDAYS & SUNDAYS: 3RD, 4TH, 10TH & 11TH SEPTEMBER

OPEN: 11AM TO 5PM EACH DAY

REFRESHMENTS & PARKING AVAILABLE

ALL THE WORK IS FOR SALE

FREE ADMISSION



North Wales' biggest Open Studio

helfa gelf / art trail

FlintShare – Food for the Community

FlintShare is a local community, volunteer, group, part of the Community Supported Agriculture (CSA) programme, dedicated to growing fresh and healthy vegetables and fruit primarily for its members but also the wider community. FlintShare is non-profit-making and currently has nearly 60 members. It has three growing sites - Cilcain, Hawarden and Northop – with Cilcain being the largest and Northop (on the Northop College campus) the main centre for distributing their produce. The Cilcain site is near the reservoirs behind Cilcain. Several members from both Gwernaffield and Pantymwyn support the growing programme there. It is a lovely and peaceful place in the hills, also rich in wildlife, to grow vegetables and fruit.

Members also enjoy social benefits of both meeting and working with others and social events during the summer throughout the year.

We are keen to inform more people about FlintShare, and welcome new members either to enjoy fresh vegetables and fruit (at very reasonable prices) and/or help grow the produce at the Cilcain or other sites. Those who grow the crops harvest the produce themselves in relation to their time and effort put in. Those seeking just fresh vegetables and fruit can collect from the 'Hub' at Northop or join with others to collect and distribute the produce. For more information or to join FlintShare please contact:

<http://www.flintshare.co.uk/>

<https://www.facebook.com/flintshare>

Peter Brownhill (Chairman) on pjb236@hotmail.com or 01244 541021

FlintShare is grateful to the Community Council for its support.



Ryan Vaughan

07969652342

Handyman

Ryanvaughan2013@gmail.com

18 Y Waen, Gwernaffield
CH7 5DP

Need a hand with your lawn, then
call in

“The Handyman”



Sustain

ARCHITECTURE

FULLY QUALIFIED RIBA ARCHITECT

Specialist in new dwellings, extensions and alterations,
barn / loft conversions, re-furbishments and holiday units .

- Planning and Building Regulation Approvals
- Full Design Service and Project Management
- Free Initial Site Visit and Consultation

Tel: 01352 741000 E: matthew.roberts@sustain-architecture.com